



SLIDE PRESENTATIONS

1. All slides were created using Microsoft 2000 PowerPoint software.
2. PWPT “viewer” software is contained on the BLET Hypermedia CD. There is no need to purchase PWPT software to simply view or show slides. However, BLET Academies are encouraged to purchase MS PowerPoint software to allow instructors greater flexibility.
3. Instructors should preview all slides prior to delivery using equipment provided by agency.
4. Classroom lighting, quality of projector, computer and software system(s) will determine display capabilities and visual quality.
5. If academies do not possess equipment needed to display slides as intended, “transparencies” can be created from PWPT files by printing copies of each.
6. Instructors are encouraged to add more graphics, photos and/or animation effects to slide presentations. However, doing so requires PWPT software.
7. Many slides can be printed and used as handout materials for students.



**INDIVIDUALS
WITH MENTAL
ILLNESS
OR MENTAL
RETARDATION**

TRAINING OBJECTIVES

- List the eight general characteristics of psychosis, out of touch with reality.
- List six behaviors an officer should display when interacting with a person with mental illness to maximize safety.

- Describe in writing the four major steps for obtaining an involuntary commitment order by a law enforcement officer.
- Describe in writing appropriate methods for intervention with mentally retarded persons.

TRAINING OBJECTIVES

- **List ten types of information which aid in identification and evaluation of a potential suicide.**
- **Given visual hypothetical situations, determine the following information:**
 - **Is the subject dangerous to self or others?**
 - **What legal authority law enforcement has.**
 - **What action should the officer(s) take?**

TRAINING OBJECTIVES

Identify local mental health resources to obtain help for individuals with mental illness or mental retardation.



WHAT IS ABNORMAL BEHAVIOR?



Phobic Characteristics

- **Definition**
 - Persistent irrational fear of object, activity, or situation.
- **Profile**
- **Subtypes significant to LEO's**

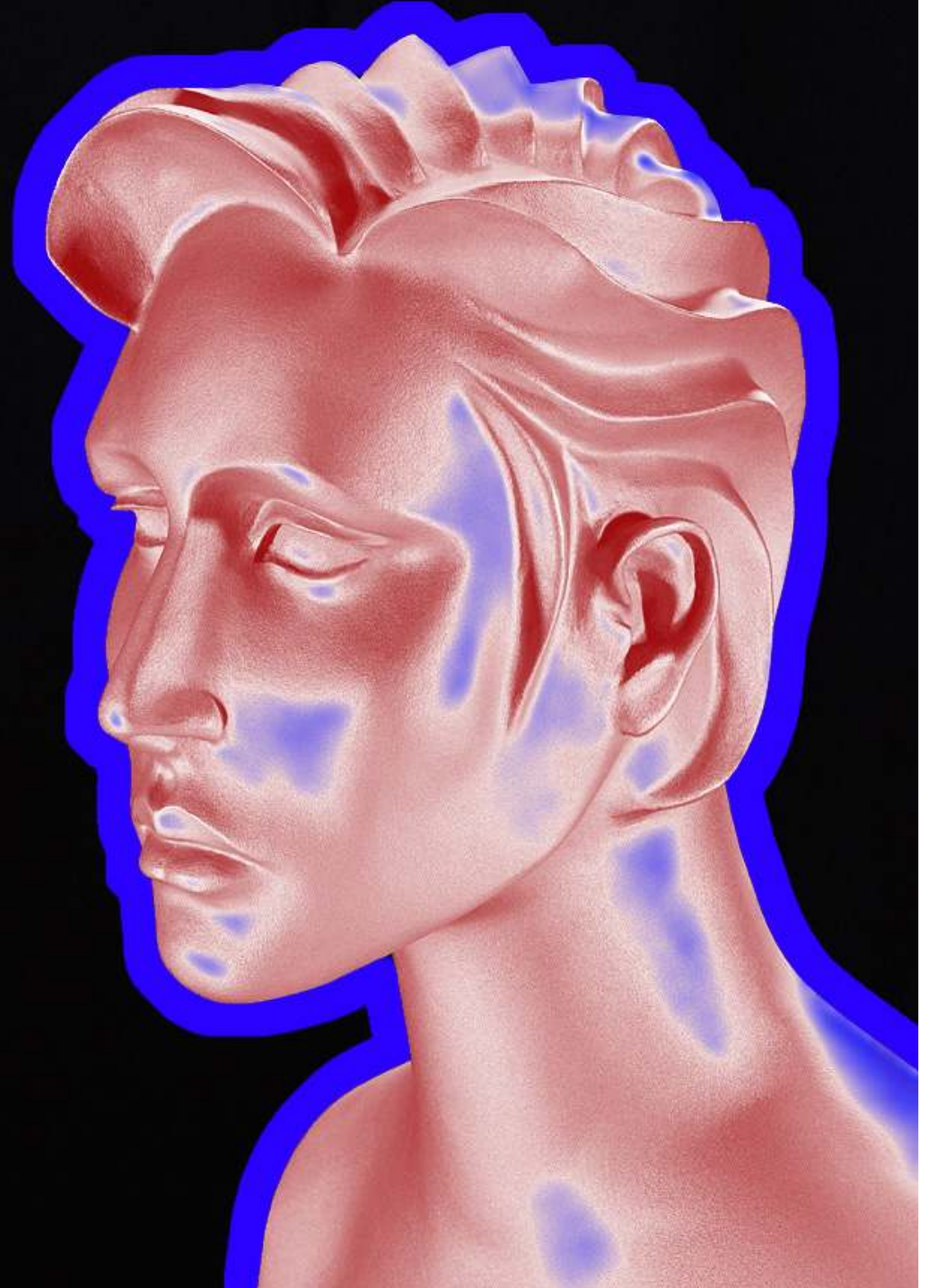


Antisocial Behavior

- **Absence of Guilt**
- **Impulsive and Irresponsible**
- **Criminal History**
- **No Morals**
- **Con-artist, Deceptive**



**ASSESSING
INDIVIDUALS
Prior to
Contact**



**Dealing With
The Mentally
Disordered
Person**



MENTAL COMMITMENTS



MENTALLY ILL

**Mentally ill and
dangerous to self or
others**

**Requires immediate
hospitalization to
prevent harm**



SUBSTANCE ABUSERS



Violent & Requires Restraint

Length of Commitment

- **Maximum of 90 days for involuntary commitments.**
- **Three days after subject requests release for voluntary.**
- **Substance abusers for 180 days.**
- **Subject always has the right to a hearing.**



Substance Abuse





Dealing with Mentally Retarded Persons

MENTALLY
MENTALLY
RETARDED
RETARDED



DEALING WITH THE Mentally Retarded

- **Go Slow!**
- **Patience is needed**
- **Rephrase questions**
- **Minimize sensory input**



Mental Health Resources

- **Association for Retarded Citizens**
- **Mental Health, Mental Retardation,
and Substance Abuse Service**
- **Special Education Departments**
- **Vocational Rehabilitation Office**

Suicide:

Myths



Facts



Suicide Signs

- Behavior Changes
- Verbal Cues
- Prior History
- Indirect Cues
- Job History

- Medical History
- Marital Difficulties
- Financial Difficulties
- Alcoholism
- Psychosis

Suicide: Demographic Characteristics

- **Age**
 - 1–9 – rare
 - 15– 9 – 3rd leading cause of death
 - 18-21 – college students – 8-12% of deaths, 2nd most frequent cause of death
 - 45+ - 2/3 males over 45, over 1/2 females over 45
 - 70-80 – peak danger age group
- **Sex**
 - Attempted Suicide – Women outnumber Men 3:1
 - Completed Suicide – Men outnumber Women 70% - 30%
- **Time of Year**
 - Most occur in spring or holidays – April – highest rate
 - 120% above average for other months
 - Christmas also has high rate

Suicide: Demographic Characteristics

- **Ethnic Variances**

- Suicides for whites are twice that of African Americans
- Native Americans have highest rate in U.S.
- Eskimos have highest rate in the world

- **Police Suicide**

- Suicide rates are higher for us
- Highest rate for officers with marital problems or other personal problems



Methods of Suicide



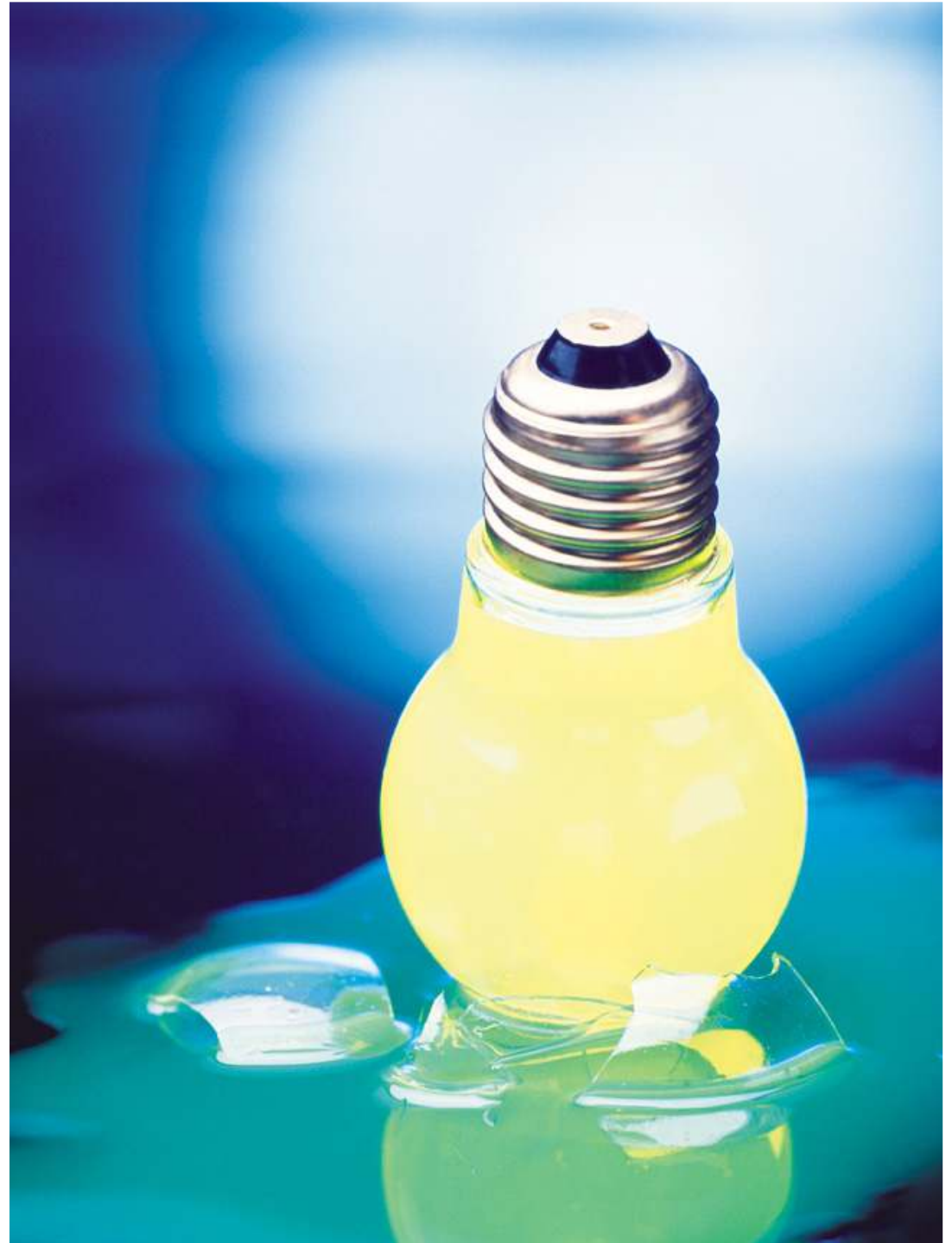
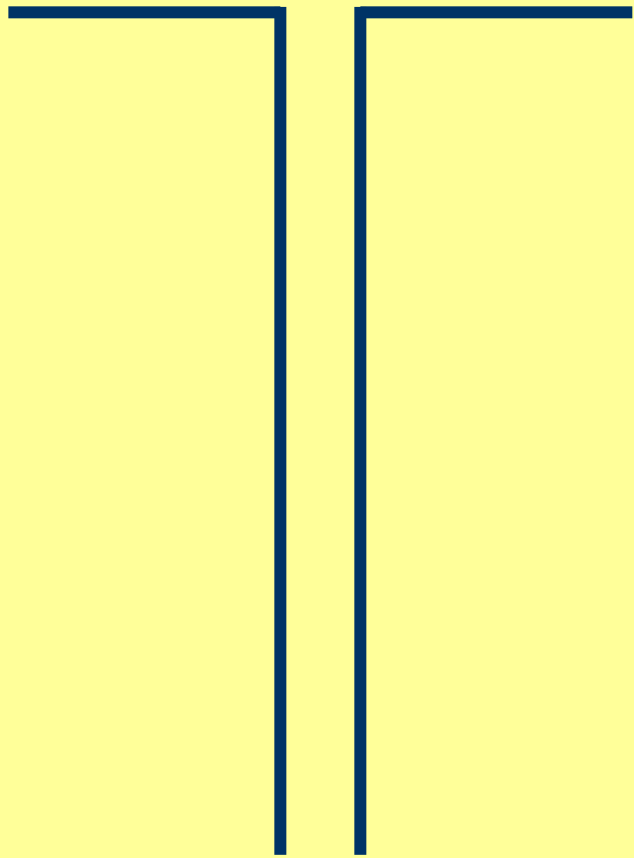
**Sleeping pills and other
Pharmaceuticals** **12.4%**

Hanging and strangulation **14.6%**

Firearms and explosives **47.6%**

- Use of pistol vs. shotgun more frequent, usually shoot in temple, face, or heart

REVIEW





**INDIVIDUALS
WITH MENTAL
ILLNESS
OR MENTAL
RETARDATION**